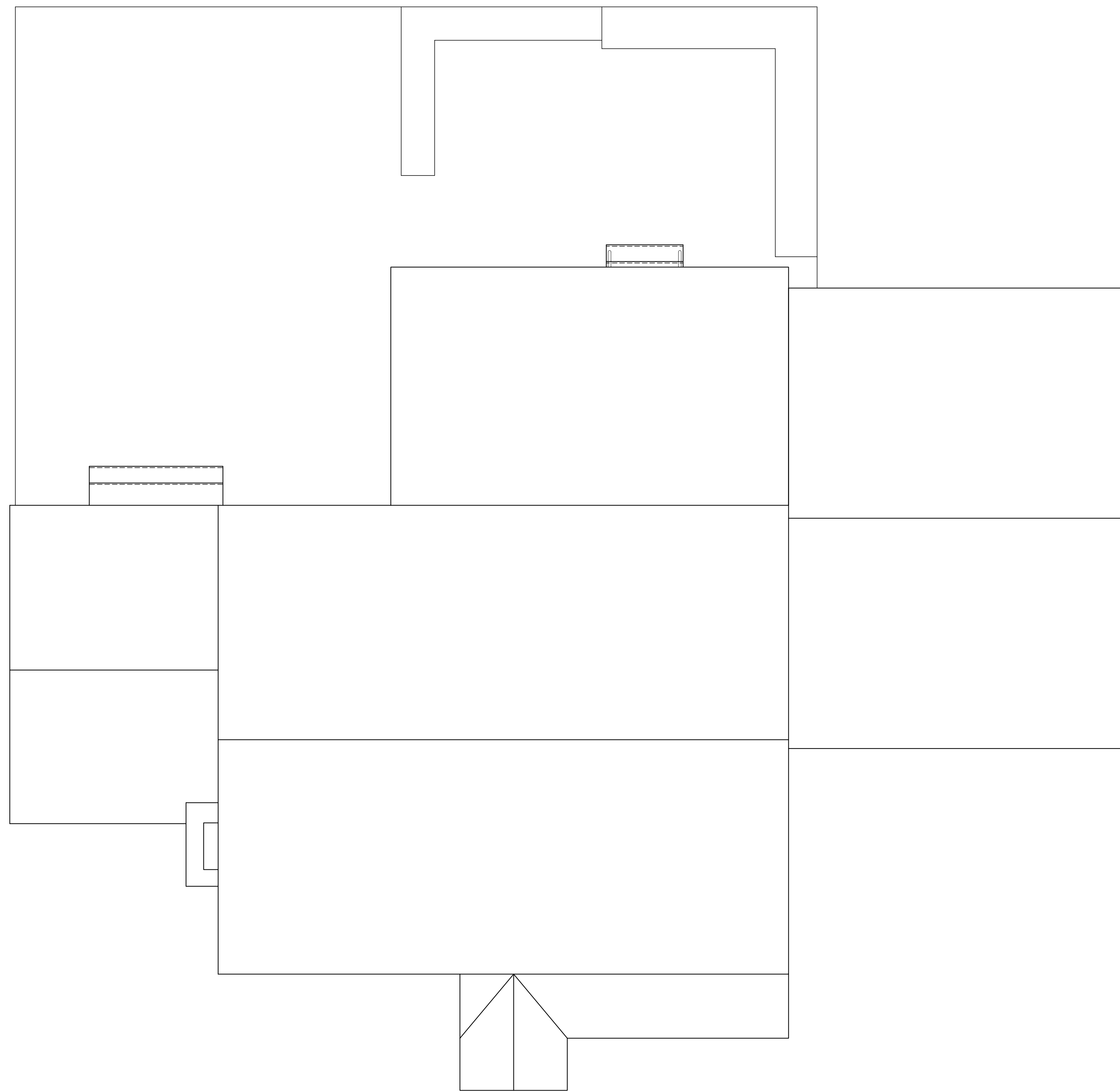




CONFIDENTIAL  
PROPRIETARY INFORMATION  
THE INFORMATION HEREIN IS OF A PROPRIETARY NATURE AND IS SUBMITTED IN CONFIDENCE FOR USE BY OUR CLIENTS ONLY. UNAUTHORIZED REPRODUCTION, PUBLICATION, DISTRIBUTION OR DISSEMINATION, IN WHOLE OR IN PART, IS EXPRESSLY PROHIBITED. THE INFORMATION CONTAINED HEREIN IS AND REMAINS THE PROPERTY OF W. S. GARRICK ARCHITECTS, AND RECEIPT OR POSSESSION OF THIS INFORMATION CONFERS NO RIGHT IN OR LICENSE TO USE OR TO DISCLOSE TO OTHERS THE SUBJECT MATTER CONTAINED HEREIN FOR ANY BUT AUTHORIZED PURPOSES. ALL RIGHTS RESERVED.



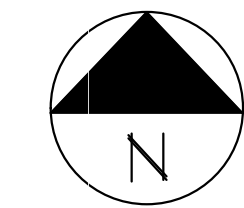
EXISTING ROOF PLAN  
1/4"=1'-0"

**Wayne S. Garrick A.I.A.**  
Architects  
801 Wilbur Road  
Farmington, Connecticut 06031  
803-776-1874 Fax 803-776-8802

Revisions:

Project Number: 8035  
Scale: 1/4" = 1'-0"  
Date: 11.23.90  
Drawn By: JC  
Checked By: USG

**COFRANCESCO**  
24 ROUND HILL RD. NORTH HAVEN, CT



**EX.2**

C:\p1\10111\10111.dwg 11/23/90 11:23:00 AM



CONFIDENTIAL  
 PROPRIETARY INFORMATION  
 THE INFORMATION HEREIN IS OF A PROPRIETARY NATURE AND IS SUBMITTED IN CONFIDENCE FOR USE BY OUR CLIENTS ONLY. UNAUTHORIZED REPRODUCTION, PUBLICATION, DISTRIBUTION OR DISSEMINATION, IN WHOLE OR IN PART, IS EXPRESSLY PROHIBITED. THE INFORMATION CONTAINED HEREIN IS AND REMAINS THE PROPERTY OF W. S. GARRICK ARCHITECTS, AND RECEIPT OR POSSESSION OF THIS INFORMATION CONFERS NO RIGHT IN OR LICENSE TO USE OR TO DISCLOSE TO OTHERS THE SUBJECT MATTER CONTAINED HEREIN FOR ANY BUT AUTHORIZED PURPOSES. ALL RIGHTS RESERVED.



EAST ELEVATION  
 1/4"=1'-0"



WEST ELEVATION  
 1/4"=1'-0"

**Wayne S. Garrick A.I.A.**  
 Architects  
 801 Lakeside Farmstead, Connecticut 06511  
 803-776-1874 Fax 803-776-8802

Revisions:

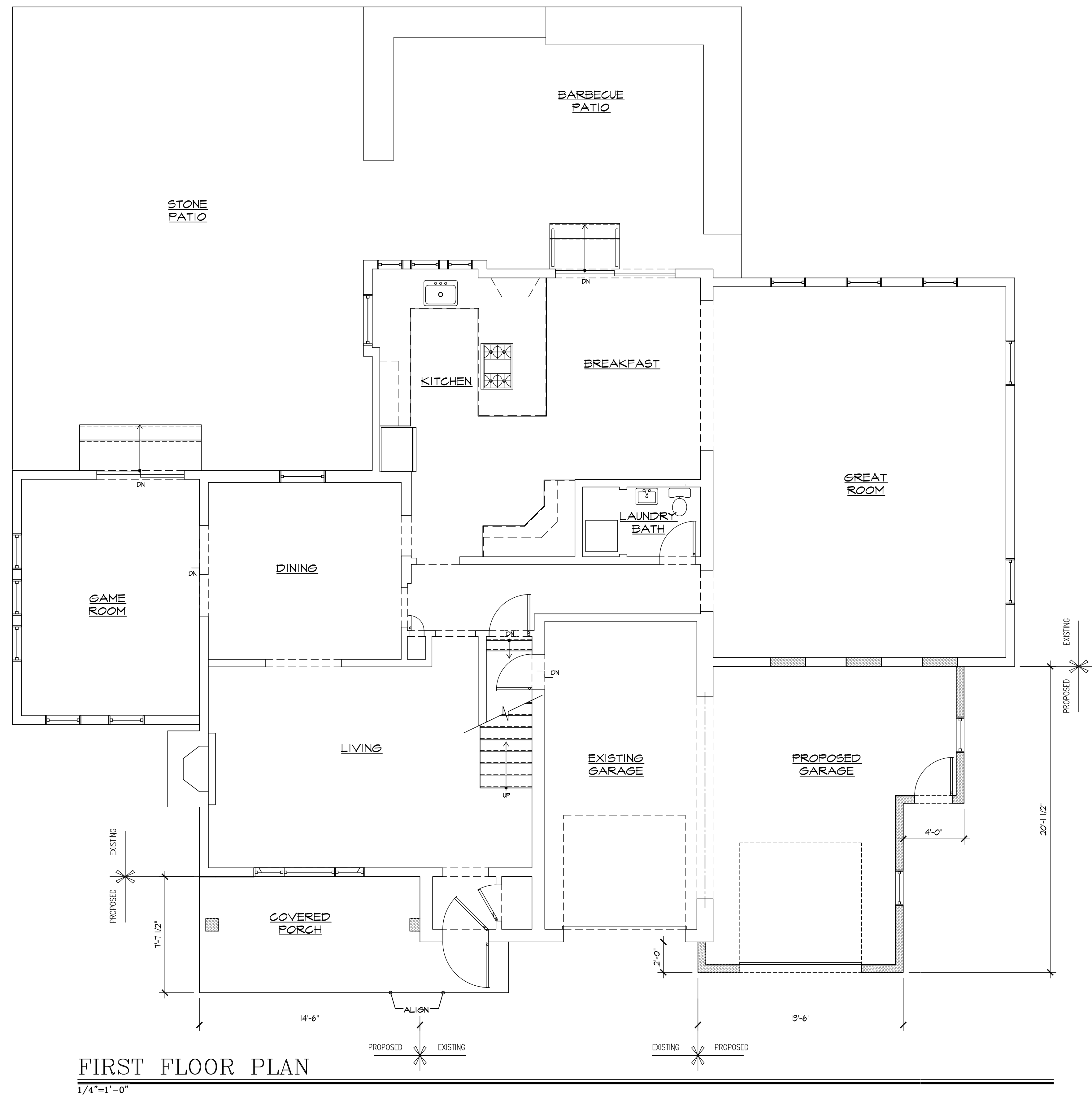
Project Number: 8035  
 Scale: 1/4" = 1'-0"  
 Date: 11.23.90  
 Drawn By: JC  
 Checked By: USG

**COFRANCESCO**  
 24 ROUND HILL RD, NORTH HAVEN, CT

**EX.4**

C:\p1\10111111\10111111.dwg

CONFIDENTIAL  
 PROPRIETARY INFORMATION  
 THE INFORMATION HEREIN IS OF A PROPRIETARY NATURE AND IS SUBMITTED IN CONFIDENCE FOR USE BY OUR CLIENTS ONLY. UNAUTHORIZED REPRODUCTION, PUBLICATION, DISTRIBUTION OR DISSEMINATION, IN WHOLE OR IN PART, IS EXPRESSLY PROHIBITED. THE INFORMATION CONTAINED HEREIN IS AND REMAINS THE PROPERTY OF W. S. GARRICK ARCHITECTS, AND RECEIPT OR POSSESSION OF THIS INFORMATION CONVEYS NO RIGHT IN OR LICENSE TO USE OR TO DISCLOSE TO OTHERS THE SUBJECT MATTER CONTAINED HEREIN FOR ANY BUT AUTHORIZED PURPOSES. ALL RIGHTS RESERVED.



**FIRST FLOOR PLAN**  
 1/4"=1'-0"

**COFRANCESCO**  
 24 ROUND HILL RD. NORTH HAVEN, CT

**SD.1**

**Wayne S. Garrick A.I.A.**  
 Architects  
 501 Wilbraham Avenue  
 New Haven, Connecticut 06511  
 803-776-1874 fax 803-776-8008

Project Number: 2035  
 Scale: 1/4" = 1'-0"  
 Date: 8.8.91  
 Drawn By: JC  
 Checked By: USG

Revisions:

Client: Wayne S. Garrick Architects, 501 Wilbraham Avenue, New Haven, CT 06511, Tel: 803-776-1874, Fax: 803-776-8008, www.wsgarrick.com





